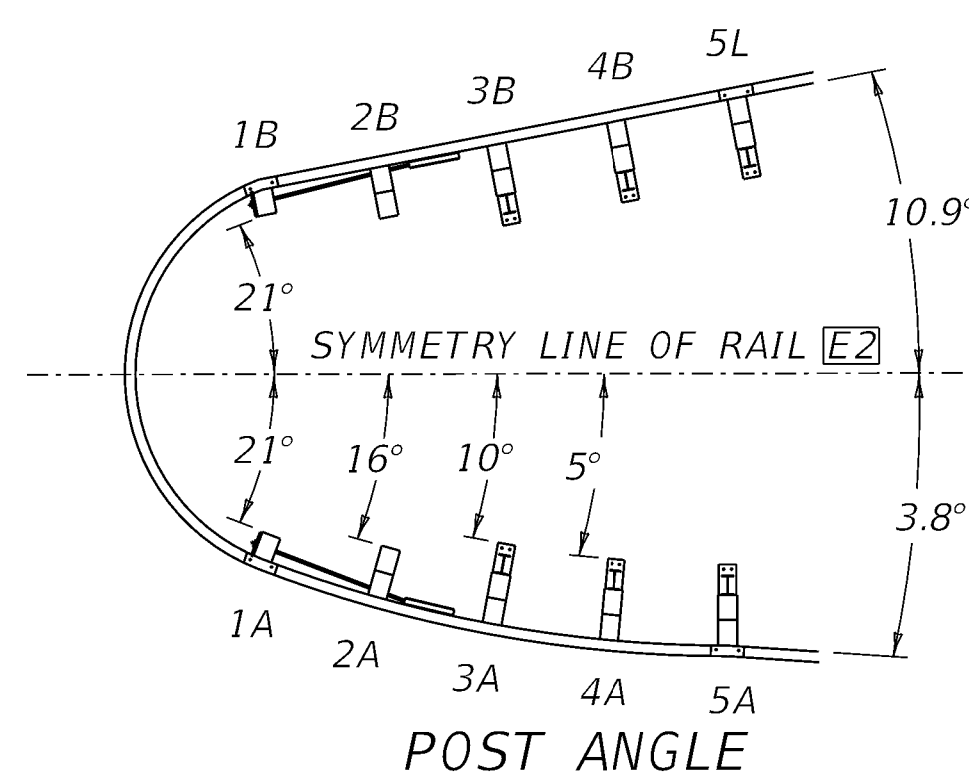
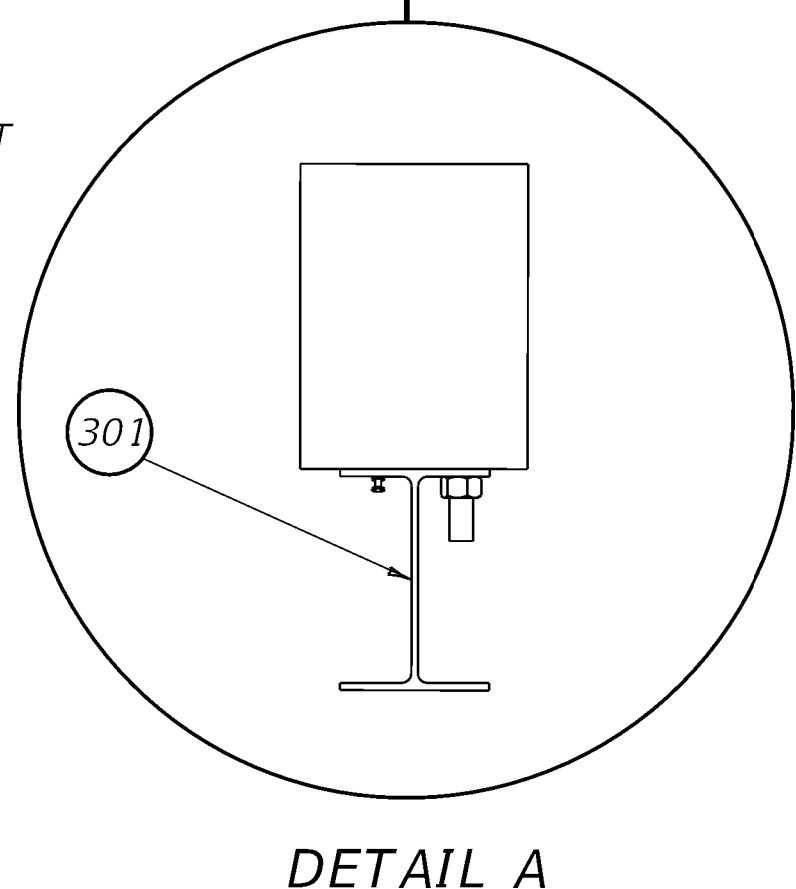
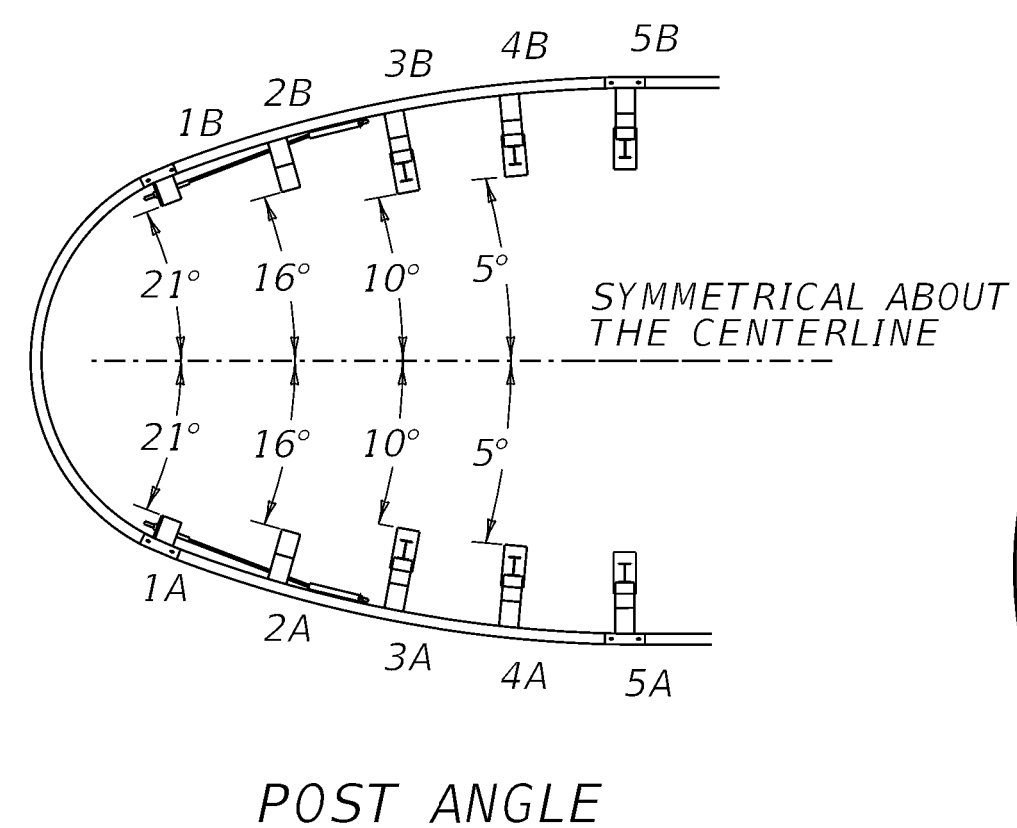
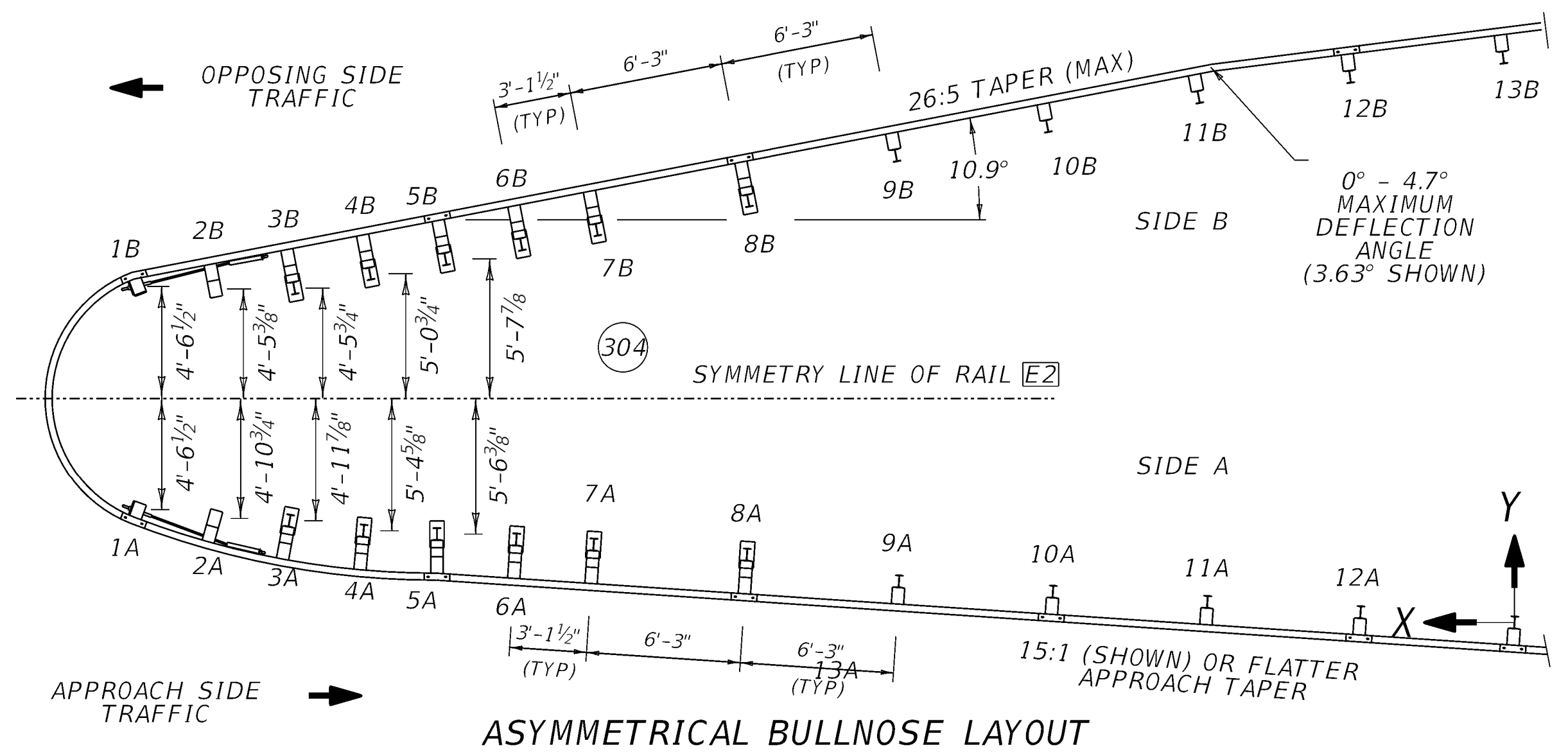
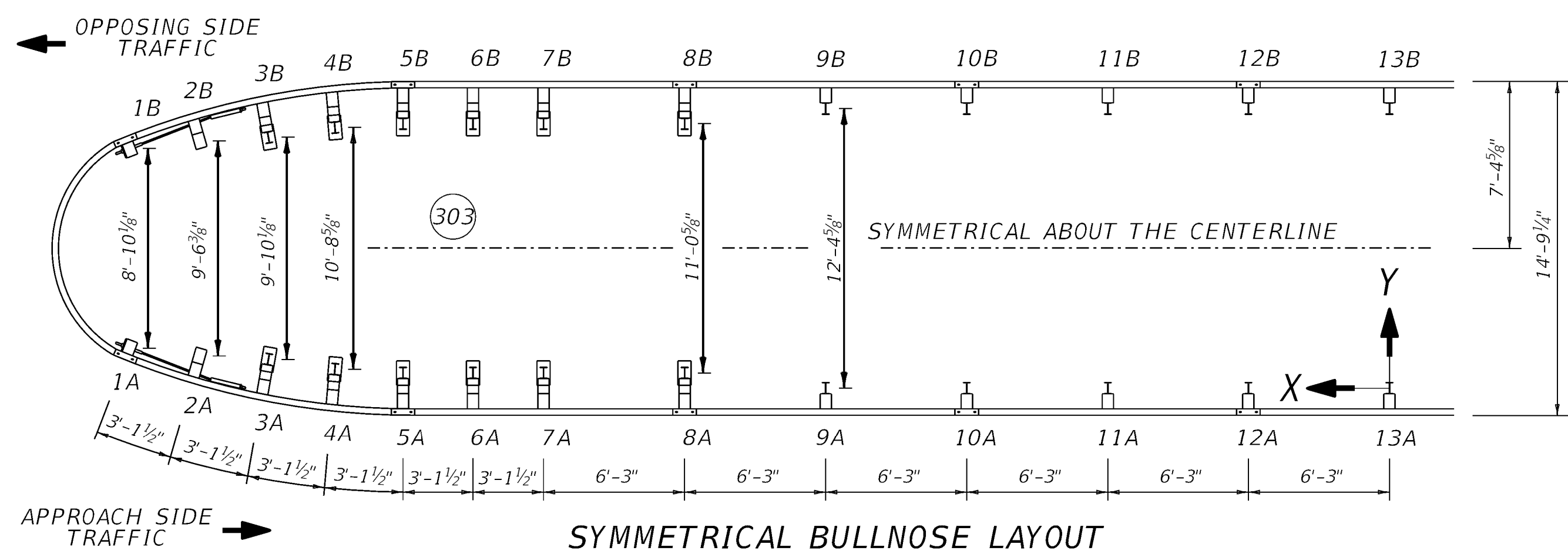


# BULLNOSE TERMINAL INSTALLATION LAYOUT

SYMMETRICAL BULLNOSE POST COORDINATES			
POST NUMBER	X (301)	Y (301)	ANGLE OF POST (FLANGE FACE) (303)
13A	0	0	0
12A	6'-3"	0	0
11A	12'-6"	0	0
10A	18'-9"	0	0
9A	25'-0"	0	0
8A	31'-3"	0'-8"	0
7A	37'-6"	0'-8"	0
6A	40'-7 1/2"	0'-8"	0
5A	43'-9"	0'-8"	0
4A	46'-9 1/4"	0'-10"	5
3A	49'-8 3/8"	1'-3 1/4"	10
2A	52'-9 1/4"	1'-5 1/8"	16
1A	55'-10 1/2"	1'-9 1/4"	21
1B	55'-10 1/2"	10'-7 3/8"	21
2B	52'-9 1/4"	10'-11 5/8"	16
3B	49'-8 3/8"	11'-1 3/8"	10
4B	46'-9 1/4"	11'-6 5/8"	5
5B	43'-9"	11'-8 3/8"	0
6B	40'-7 1/2"	11'-8 5/8"	0
7B	37'-6"	11'-8 5/8"	0
8B	31'-3"	11'-8 3/8"	0
9B	25'-0"	12'-4 5/8"	0
10B	18'-9"	12'-4 5/8"	0
11B	12'-6"	12'-4 5/8"	0
12B	6'-3"	12'-4 5/8"	0
13B	0	12'-4 5/8"	0

ASYMMETRICAL BULLNOSE POST COORDINATES			
POST NUMBER	X (301)	Y (301)	ANGLE OF POST (FLANGE FACE) (304)
13A	0	0	3.8
12A	6'-2 7/8"	0'-5"	3.8
11A	12'-5 3/4"	0'-10"	3.8
10A	18'-8 1/2"	1'-3"	3.8
9A	24'-11 1/4"	1'-8"	3.8
8A	31'-1 1/2"	2'-9"	3.8
7A	37'-4 1/2"	3'-2"	3.8
6A	40'-5 1/8"	3'-4 1/2"	3.8
5A	43'-8 3/8"	3'-7"	0
4A	46'-8 3/8"	3'-8 5/8"	5
3A	49'-8 3/8"	4'-1 1/2"	10
2A	52'-9 5/8"	4'-1 3/4"	16
1A	55'-11 3/8"	4'-6"	21
1B	55'-11 3/8"	14'-2 1/2"	21
2B	52'-9 1/4"	14'-1 1/2"	10.9
3B	49'-6 3/8"	14'-0 3/4"	10.9
4B	46'-5 1/2"	14'-7 1/8"	10.9
5B	43'-4 3/4"	15'-3"	10.9
6B	40'-4"	15'-10"	10.9
7B	37'-3 1/8"	16'-5 1/8"	10.9
8B	31'-1 1/2"	17'-7 1/4"	10.9
9B	25'-1 3/8"	19'-5 3/8"	10.9
10B	18'-11 3/8"	20'-7 1/2"	10.9
11B	12'-10"	21'-9 3/8"	10.9
12B	6'-8 1/8"	22'-7 1/2"	7.3
13B	0'-5 3/4"	23'-5"	7.3



SUBMITTED: *W. J. Layson* DIVISION DIRECTOR 12-10-2024 DATE